

ADJUDICATED EVENTS

2010-2011 OMEA

Choral Sight-Reading Guidelines (Revised June 2009)

CLASS AA

Meters: Two-four; three-four; four-four; cut-time; six-eight
Keys: Major keys (no more than four sharps or flats)

Texture: Homophonic and contrapuntal (not more than 20% counterpoint)

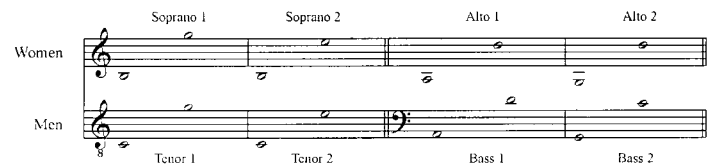
Harmony: Diatonic ("traditional," "hymn-like" harmony)

Intervals: Adjacent and non-adjacent skips in the tonic chord; adjacent chord tones in the sub-dominant and dominant seventh chords; DO down to FA (1 down to 4)

Rhythm: Basic patterns utilizing sixteenth, eighth, quarter, half, and whole notes and rests; dotted eighth or longer note values; one-beat triplet; simple syncopation; ties across bar lines

Major cadences: Authentic and plagal

Voicing: Mixed Chorus – SATB;
Women's Chorus – SSAA; Men's Chorus – TTBB



CLASS A

Meters: Two-four; three-four; four-four; cut-time

Keys: Major keys (no more than four sharps or flats)

Texture: Homophonic and contrapuntal (not more than 20% counterpoint)

Harmony: Diatonic ("traditional," "hymn-like" harmony)

Intervals: Adjacent and non-adjacent skips in the tonic chord; adjacent chord tones in the sub-dominant and dominant chords; DO down to FA (1 down to 4)

Rhythm: Basic patterns utilizing eighth, quarter, half, and whole notes and rests; dotted eighth or longer note values; one-beat triplet; simple syncopation

Major cadences: Authentic and plagal

Voicing: Mixed Chorus – SATB; Women's Chorus – SSA; Men's Chorus – T(T or B)B

Class A Ranges:



CLASS B

Meters: Two-four; three-four; four-four

Keys: Major keys (no more than four sharps or flats)

Texture: Homophonic and short imitative entrances

Harmony: Diatonic ("traditional," "hymn-like" harmony)

Intervals: Adjacent and non-adjacent skips in the tonic chord; adjacent chord tones in the dominant chords; DO down to FA (1 down to 4)

Rhythm: Basic patterns utilizing eighth, quarter, half, and whole notes and rests; dotted quarter or longer note values; one-beat triplet

Major cadences: Authentic and plagal

Voicing: Mixed Chorus – SATB; Women's Chorus – SSA;
Men's Chorus – T(T or B)B

Class B Ranges:



CLASS C & D

Meters: Two-four; three-four; four-four

Keys: Major keys (no more than four sharps or flats)

Texture: Basically homophonic

Harmony: Diatonic ("traditional," "hymn-like" harmony)

Intervals: Adjacent and non-adjacent skips in the tonic chord; adjacent chord tones in the dominant chords

Rhythm: Basic patterns utilizing eighth, quarter, half, and whole notes and rests; dotted quarter and longer note values

Major cadences: Authentic and plagal

Voicing: Mixed Chorus – SATB; women's chorus – SA; men's chorus – TB

Class C/D Ranges:

